

David Metcalfe-Carr

Portfolio

Contents

3...Marketing leaflet
John Hardman Stained Glass

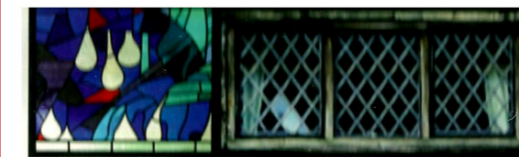
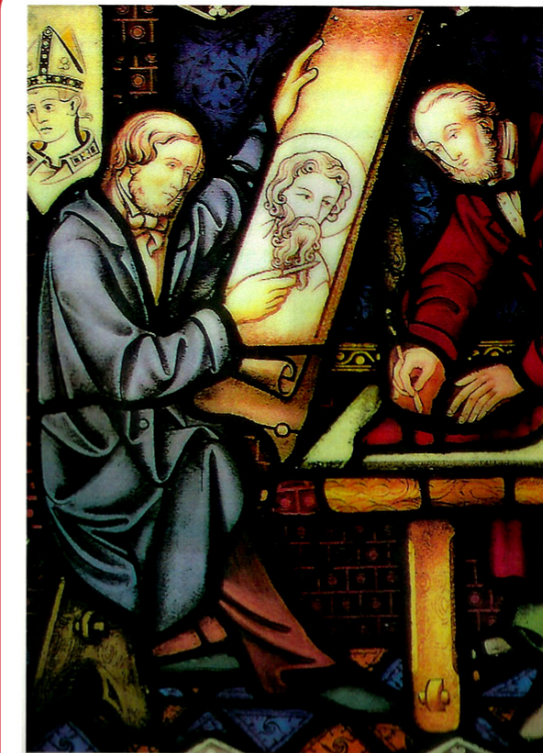
4...Fold out Journey Planning leaflet
Highways Agency

6...Graduate Scheme booklet
Highways Agency

8...Newsletter
Highways Agency

10...Website
Ark Stained Glass

12...Design & Illustration
PJANG magazine



From Shanghai in the east to San Francisco in the west, from northern Scotland to southern Tasmania, the name of John Hardman of Birmingham has been celebrated for over 160 years as a byword for excellence in the field of decorative art. By safeguarding the skills and the high standards of design and manufacture the present firm of Pugin Hardman & Powell have been uniquely placed to take advantage of the resurgence of interest in the arts and crafts of the Gothic Revival, undertaking many new commissions while also applying their expertise to the restoration and conservation of historic glass, metalwork and decoration.

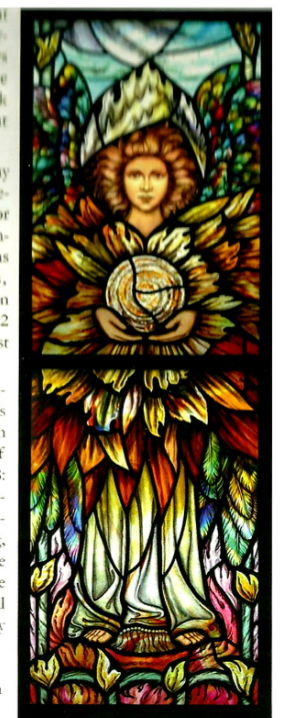
Though work for the Catholic Church predominated, Hardman's were drawn into the restoration of many large Anglican cathedrals and churches as architects such as Burges, Butterfield, Carpenter and Scott turned to them for glass, metalwork and decoration. Their work for George Gilbert Scott at Worcester cathedral included the painted decoration of the choir and transepts as well as the great



east and west windows. Great country houses were also furnished by Hardman: Alton Towers (Staffordshire), Bilton Grange (Warwickshire), and Scarisbrick Hall (Lancashire) to name but three.

With skills still strong to this day Hardman's is able to faithfully restore and fabricate windows for periodic homes around the country. Recently the company has worked on a wide range of builds, including a listed church in Shipton-on-Stour and a Grade 2 Listed building in Tettenhall, West Midlands in 2008.

The detailed story of the company researched from the firm's archive and lavishly illustrated in colour with the finest examples of their work, was published in 2008: Michael Fisher, Hardman of Birmingham: Goldsmith and Glasspainter, Landmark Publishing, ISBN 978-1-84306-362-9, price £25 (hardback). It is available from Pugin Hardman & Powell Ltd, 26 Frederick Street, Jewellery Quarter, Birmingham B1 3HH, tel. +44 (0)121 429 7609, puginhardmanpowell@gmail.com or through your local bookshop.



Traffic information services available from the Highways Agency



Website: You can get live traffic information in a number of ways – all to help you plan your journey. You can also find information about our work to provide safe roads, reliable journeys and informed travellers. Our online information is also available on compatible mobile devices at: www.highways.gov.uk/mobile



Key points:

- Updates on your mobile
- Customised information
- Online live traffic information at: www.highways.gov.uk/traffic



The Highways Agency Information Line: You can speak to someone at our contact centre 24 hours a day. Our advisors have access to all of our live traffic data so can give you updates about all major incidents on our network.



Key points

- Our contact centre is available 24/7/365
- Call: **08457 50 40 30***
- Email: ha_info@highways.gsi.gov.uk

Automated telephone service: You can access our live information for England's motorways and major 'A' roads to get the latest information before you set off or when you stop for a break

– never use a mobile phone while driving.



Key points

- Phone for the latest traffic information: **08700 660 115***
- By road or region
- Switch off before you drive off

Traffic information services available from the Highways Agency

Website: You can get live traffic information in a number of ways – all to help you plan your journey. You can also find information about our work to provide safe roads, reliable journeys and informed travellers. Our online information is also available on compatible mobile devices at: www.highways.gov.uk/mobile

Key points:

- Available on your mobile
- Customised information
- Online live traffic information at: www.highways.gov.uk/traffic

The Highways Agency Information Line: You can speak to someone at our contact centre 24 hours a day. Our advisors have access to all of our live traffic data so can give you updates about all major incidents on our network.

Key points:

- Our contact centre is available 24/7/365
- Call: **08457 50 40 30***
- Email: ha_info@highways.gsi.gov.uk

Automated telephone service: You can access our live information for England's motorways and major 'A' roads to get the latest information before you set off or when you stop for a break

– never use a mobile phone while driving.

Key points:

- Phone for the latest traffic information: **08700 660 115***
- By road or region
- Switch off before you drive off

Traffic Radio and automatic road builders: For news of the very latest traffic conditions use your mobile with radio. Traffic Radio, which transmits continuous road information, is available on the internet at: www.trafficradio.org.uk and on compatible mobile handsets.

Key points:

- Available on DAB digital radio
- Online at www.trafficradio.org.uk
- Available on compatible mobile handsets

Variable message signs: The Highways Agency uses variable message signs to provide you with the latest traffic information. These signs can be used to provide you with the latest traffic information. They can be used to provide you with the latest traffic information. They can be used to provide you with the latest traffic information.

Key points:

- Information about your driving
- Variable signs for live road updates
- Traffic message messages

Helping you before and during your journey on our roads

Variable message signs: The Highways Agency uses variable message signs to provide you with the latest traffic information. These signs can be used to provide you with the latest traffic information. They can be used to provide you with the latest traffic information.

Key points:

- Information about your driving
- Variable signs for live road updates
- Traffic message messages

Disruption Routes: If the roadworks are caused by any incident, we advise you to use the roadworks to get the latest traffic information. There are live signs of disruption, please use the information.

Key points:

- Available on mobile
- Online at www.highways.gov.uk
- Available on compatible mobile handsets

Glue point
This will not print

Get a question or comment? Call 08457 50 40 30 or visit www.highways.gov.uk

For live traffic information call 08457 50 40 30 or visit www.highways.gov.uk

24 hours a day, 365 days a year

The following website contains journey planning information for London, Scotland, Wales and Northern Ireland

Travel and London: www.tfl.gov.uk
 Scotland: www.scotrail.co.uk
 Wales: www.walesrailways.com
 Northern Ireland: www.northernrailway.com

Safety at roadworks

The Highways Agency is working to reduce the time you spend stuck in traffic at roadworks. We are doing this by using the latest technology to help you plan your journey. We are also working to reduce the number of roadworks on the road. We are doing this by using the latest technology to help you plan your journey. We are also working to reduce the number of roadworks on the road.

Think Ahead Move Ahead
Your free guide to easier journeys
Free by post

We at least promise that get us in to it in a reasonable amount of time. It's not a 100% guarantee, but we'll do our best to get you there as quickly as possible. We'll do our best to get you there as quickly as possible. We'll do our best to get you there as quickly as possible.

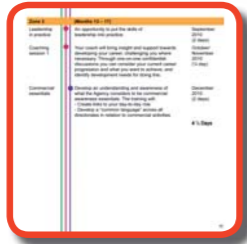
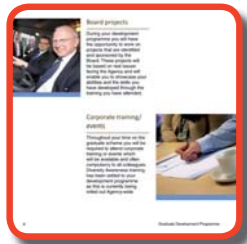
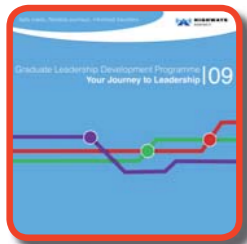
Glue point
This will not print

Glue point
This will not print

If you need help using this or any other Highways Agency information, please call 08457 50 40 30* and we will assist you.

The route of your journey

Graduate Leadership Development Programme | 09 Your Journey to Leadership | 09



The Graduate Leadership Development Programme is an extremely important but training is also crucial in your development towards leadership. This development programme Your Journey to Leadership therefore focuses on the training you will receive as part of the graduate scheme and is structured around key three themes:

Leadership Programme and Project Management
Commercial awareness

Fellow travellers

This programme is for new external recruits or existing colleagues who have joined either the Generalist, Engineering or Accounting routes of the Graduate Leadership Development schemes.


Travel time and costs

The programme will last two years and is made up of 22 half training days (26 half days for those attending Insight into Management). Certain courses will also involve a number of assignments which will have to be completed in your own time.

Training will take place in Birmingham as this is a central location for all graduates and joining instructions for courses will be sent by the Learning and Development Team (L&D).


The L&D team covers the costs of the training, any necessary overnight accommodation, refreshments and meals where specified. Other expenditure such as travel will have to come out of your local Travel and Subsistence (T&S) budget.

Safe roads. Reliable journeys. Informed travellers



From B to C

The Cube relocation



Issue 4 – Spring 2009

Welcome to Issue 4 of From B to C. This edition continues our commitment to keep you fully involved with our move to The Cube in March 2010.

What's been happening?

The project is running to programme and we're still scheduled to move in Spring 2010, with the building being handed over to the HA for us to fit out with furniture and IT telephony at the end of January 2010. Directors are being consulted on the detailed timings for the move.

Construction of The Cube is moving forwards very quickly. The concrete has been laid on our floors, and the external cladding has been fitted up to Level 10 of the building. Escalators have also been fitted between levels 6 & 8.

The Executive Group have signed off the final version of the space plans and you

can view them on the Portal. Copies of architects boards showing the space plans and proposed colour schemes are now on display on floors D1, C3 and C6. We are now looking at designs and colour schemes for things like carpets, walls, meeting rooms and fixtures and fittings. We will be asking for your views next month.

We have completed all of the high-level ICT requirements workshops and ATOS have produced their final report, which has now been passed to the ICT workstream for the project.

We now have a very good idea of what our IT and telephony requirements are. Steve Barlow leads the IT workstream for us and he will very shortly be

talking in more detail to key people so he can understand every division's needs. A big thanks to all of you who attended these workshops – your input was invaluable to help the Project Team move forward.



Colour schemes

The developers' architects (Make architects) are producing some options for colour themes for our floors in The Cube. Although these may contain some of the corporate HA colours, they will not simply be shades of blue. Once Make have put the themes together, we will be asking for your opinions. We are planning to mock up an area (probably in one of the empty retail units in The Mailbox), using the different themes at the end of May. We will invite you all to attend and vote for the themes that you prefer. We are looking to provide transport for you to and from the venue - watch this space. Do take the time to attend the mock-up - this is your chance to have a real say in the look and feel of our new office space.

Storage and clearing out

The clear-out days in Broadway are well under way, and there have been really positive results in many directorates. This clear-out will continue into May, by which time we hope to have cleared out up to half of what we currently hold. Although we still want to encourage sending important files to Iron Mountain, this is our chance to throw away and recycle anything we no longer need, including general rubbish. In July, Moveplan (our logistics consultants) will take a snapshot of our storage, giving us an idea of what progress we've made. We'll then move on to the second phase of clear-out days before a final, detailed storage audit in September. We're making excellent progress, so please keep up the good work!

Diversity at The Cube

We are currently finalising the Equality Impact Assessment (EIA), which looks at how the move to The Cube will affect various groups and what action we need to take. Drivers Jonas, our external Project Managers, will be reporting back with their findings and recommendations before the end of April.

A number of the issues raised during the EIA workshops related (unsurprisingly) to car parking issues and how alternative transport arrangements will affect individuals. Staff are still raising issues around this and we're working hard to find fair solutions. Charles Roper (HRS Ops) is now leading on these issues and he will be circulating more information shortly.



Working Communications Sub-Group Members:

Directorate	Name	Telephone
PFM	Helen Newis	6189 8044
PFM	Lynn Wilby	6189 2503
AICD	Eric Lodge	6189 8252
Travel Planning	Ian Shurvinton	6189 4132
NetServ	Kulvinder Samrai	6189 5953
NetServ	Owen McCarthy	6189 8061
NO Central	John Pontone	6189 8544
NO Central	Dave Fawbert	6189 8587
Access for All	Alan Rowley	6189 5974
NO WM	Simon Lee	6189 8722
NO WM	Stephen Walls	6189 8557
NO WM	Jessica Kenny	6189 8010
NO EM	Paul Bodmeade	6189 2559
FS	Ranjit Rai	6189 4236
ID	Mike Winters	6189 8168
ID	Ceri Davies	6189 8315
HRS	Lucy Jasper-Martin	6189 2532
HRS	Charles Roper	6189 5973
MP	Sheryl Manders	6189 8155
MP	Ian Taylor	6189 8195

Want to know more?

You can find project-related information on the Estates Strategy Pages of the Portal.

If you have any questions about the project, please contact Ross Higham, the PFM Project Manager, who will be happy to help.

We have a dedicated inbox for you to ask any questions or make comments. We monitor this daily and try to answer any questions within 24 hours. Just look for The Cube Relocation in the Outlook address book. Please use it!

If you want to include an article or feature in the next newsletter, please let Ross know.

Storage Sub-Group Members:

Directorate	Name	Telephone
PFM	Helen Newis	6189 8044
PFM	Harj Chans	6189 4093
AICD	Rachel Joy	6189 5975
NetServ	Bobby Islam	6189 8243
NetServ	Bernadette Lule	6189 8450
NO Central	Jane Winfield	6189 8404
NO Central	Jaswant Ujjal	6189 2598
NO WM	Stephen Walls	6189 8557
NO WM	Simon Lee	6189 8722
NO EM	Paul Bodmeade	6189 2559
FS	Martin Cook	6189 8265
ID	Sukhwinder Cheeta	6189 8271
HRS	Eric Lau	6189 8500
MP	Nicky Franklin	6189 8749

If you have any questions specific to your business area, you can contact your Project Board or Sub Group members - see the list in this newsletter.

Project Board Members:

Directorate	Name	Telephone
PFM (SRO)	Peter Gruen	5173 6559
PFM (Project Sponsor)	Tony Griffiths	5173 6677
PFM (Project Manager)	Ross Higham	07710 958526
PFM	Helen Newis	6189 8044
AICD	Robin Frith	6189 8374
NetServ	Steve Smith	6189 8321
NetServ	Godfrey Short	6189 8135
NO Central	Janet Butler	6189 8088
NO WM	Tim Harbot	6189 8076
NO EM	Mike Wilson	6189 8055
FS	Clive Finch	6189 8924
FS	Nick Sharman	3814 4777
ID	Steve Barlow	3904 8459
ID (Designated Director)	Richard Willson	6189 8259
HRS	Charles Roper	6189 5973
MP	Sheryl Manders	6189 8155

What happens next

The clear out days are still ongoing, and we need an extra effort from everyone to clear as much as we possibly can before the next storage audit, so that we see a real improvement.

Our next step is to produce and display the mock-ups of colour themes. We're already working on this and will keep you updated.

The project board will be visiting The Cube over the coming months to view progress. We're sure the members will have lots of information to feed back to you after this.

You can follow the progress of The Cube's construction by webcam at: http://www.bbc.co.uk/birmingham/content/webcams/mailbox_webcam.shtml



ARK STAINED GLASS & LEADED LIGHTS LIMITED

CONSERVERS & CREATORS OF ECCLESIASTICAL & CONTEMPORARY GLASS



[Home](#)

[Company Profile](#)

[Portfolio](#)

[Products & Services](#)

[Making A Leaded Light](#)

Ark Stained Glass &

Ark Stained Glass & Leaded Lights Ltd are manufacturers and restoration



ARK STAINED GLASS & LEADED LIGHTS LIMITED

CONSERVERS & CREATORS OF ECCLESIASTICAL & CONTEMPORARY GLASS

[Home](#)

[Company Profile](#)

[Portfolio](#)

[Products & Services](#)

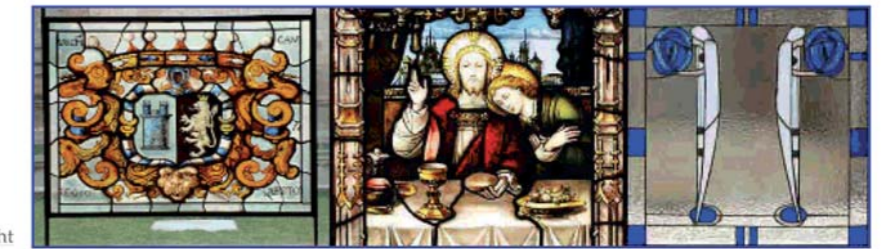
[Making A Leaded Light](#)

Ark Stained Glass & Leaded Lights Ltd

The Oaks
Callow
Hereford
HR2 8DF

01981 540330

info@arkstainedglass.co.uk



Ark Stained Glass & Leaded Lights Ltd. are manufacturers and restoration specialists with a combined experience of over 100 years.

We restore period timber and steel casement windows using only traditional and hand crafted fixtures and fittings. We also supply and fit protective polycarbonate or metal guards to protect vulnerable and valuable glass.

In addition to the traditional methods of glazing, we are able to triple glaze original and new leaded lights, encapsulating the traditionally leaded window in a sealed unit using glass that conforms to current building regulations. We are fully compliant with current building site regulations and all our fitting staff are CSCS card holders.

As individual craftsmen we have worked on a large number of prestigious public and private buildings.

Special price only £1.75

RADIO BLAH BLAH: ARE DJs THE NEW ROCKSTARS?

pjang

CELEBRITY SLEEPWATCH RETURNS!

I'm looking forward to a decent night's sleep!

- Oniday

Who will wear the best Top PJ this season?

NEW FEATURE LOVE BAKERY!

IS YOUR MAN HOT STUFF OR BURNT TOAST?

STELLA

WILL LEAKED SEX TAPE TURN STARLET INTO SUPERSTAR OR SUPERTART?

FASHION XTRA

Return of the Fashion Sheep! Mimic your fave celeb's wardrobe in a trip to Primark!



Last Night I Dreamt That Somebody Loved Me

Introduction by rol hirst

I had a dream that one day I'd become a writer. That eventually someone would read a story I'd written and want to pay me money to write some more. That dream began when I was still in school. It followed me through university, and into a job I loathed and the writing 'broke off'. I just 'lived' yet, but it had a damn good feeling.

Still, that doesn't stop the stories from coming, and if I didn't write them down they'd just drive me mad. Two of the stories in this issue came to me in dreams. That happens quite a lot, but most of the time what I think is an earth-shattering out-of-left-field turn out to be unrecognisable gibberish when I read back my scribbles under the next morning. Even the ones that do survive the daylight end up being seriously leading me stages before I'm prepared to let them loose on the world. Fortunately I'm blessed with some wonderful collaborators who are expertly skilled with mace and coach, cudgel and knife. And I'm not just talking about the ones who end up drawing the strips.

Special thanks go out this issue to my former Jack and Dick contractor, Adrian Bevan, who offered invaluable advice on the original draft of this issue's second story, drawn here by talented reviewer Ryan Taylor (thanks, Ryan!). When I originally dreamt up the idea, I got it past Adrian as a possible Future Shock pitch for ZODIAC. Adrian knows a thing or two about such matters having ground the pages of 'Tea' on more than one occasion, both as artist and writer. Being as my own 'Tea' exposure is limited to reading the in-bag-out-of-pipe Zodiack collection, I needed some feedback from someone who knew a little more about that market. His advice was valuable. 'It's not bad', he said. 'I'd be happy to see it in the magazine.' Well, not exactly. Adrian's much nicer than that. He did however reveal that most successful Future Shocks don't just have one high concept idea - they have at least two. The story as handed me by Margherita was little more than a clever gag, and I lacked any characterisation. So, to see the dreamt advertising parance that fills my 3 to 5 with such angry stretch, it had a who and a what, but I didn't really have a why. Still, I had the idea enough that I kept chipping away at it, and a couple of months later, here it is. If it doesn't work, don't blame Adrian - he tried to warn me.

The fact that this week's first strip also arrived in a double-dreamer double-me took every time I think about it. It's the issue's Rod Sterling moment, but what the hell with my subconscious doing something like this overlaid between 2x7? There are times I seriously worry about my own mental health. Then again, years of head-on ambition... 'It's only surprising he didn't crack sooner.' The headline Tony Oakes relates to was this one. It's funny not reading Tony Oakes, do yourself a favour and gorge True Stories Comics now.

I've saved the best till last in the introduction. It's been a real honour to work with Chris Askham again. Back in the heady days of the small press glory, Chris was always posting out mailing copies to himself and in collaboration with writers like Owen Powell, Sir, George, Silvio... I even read him in his day as a story for The Jack Arnold at one point. Once you've had Chris draw one of your strips, you always want more. It's only taken ten years... but for such a special occasion, let me draw a story I'd actually thought up while awake. Let's hope we get to do this again before 2010.

Thanks also to Nige and Davey for the covers, and for everything else you do. This book wouldn't be possible without you. Thanks to Bill and the guys and girls at Ace Comics for your late generosity and selling the book. Thanks to Richard Bruton at Forbidden Planet online for the kind review. And thanks to you, kind reader, for your support.

pJANG will return later this year with more misanthropic melancholy multi-panelled by my mates with pencils and ink. If you're comic artist with nothing to draw this year, do drop me a line and let me know what we can team up together. One day I'll find someone to take my ongoing word-superheroes Department Q The Peculiar. That one isn't 'till a year hence...

If you're not an artist, but you're reading this comic anyway, thanks for buying & Drop me a line and let me know what you think. The reason is a very lovely place without your feedback, so give me a shout and I'll see you later.

CONTACT!

WEBSITE www.rolhirst.co.uk
BLOG rolhirst.blogspot.com
EMAIL rolhirst@gmail.com

FACEBOOK People who Just Ain't No Good
SNAILMAIL Rol Hirst, 30 Grassmere Road, Metham, Hants, Hants RG10 4HF

